

Siqura BC840 Series

Full HD IP box camera with embedded analytics

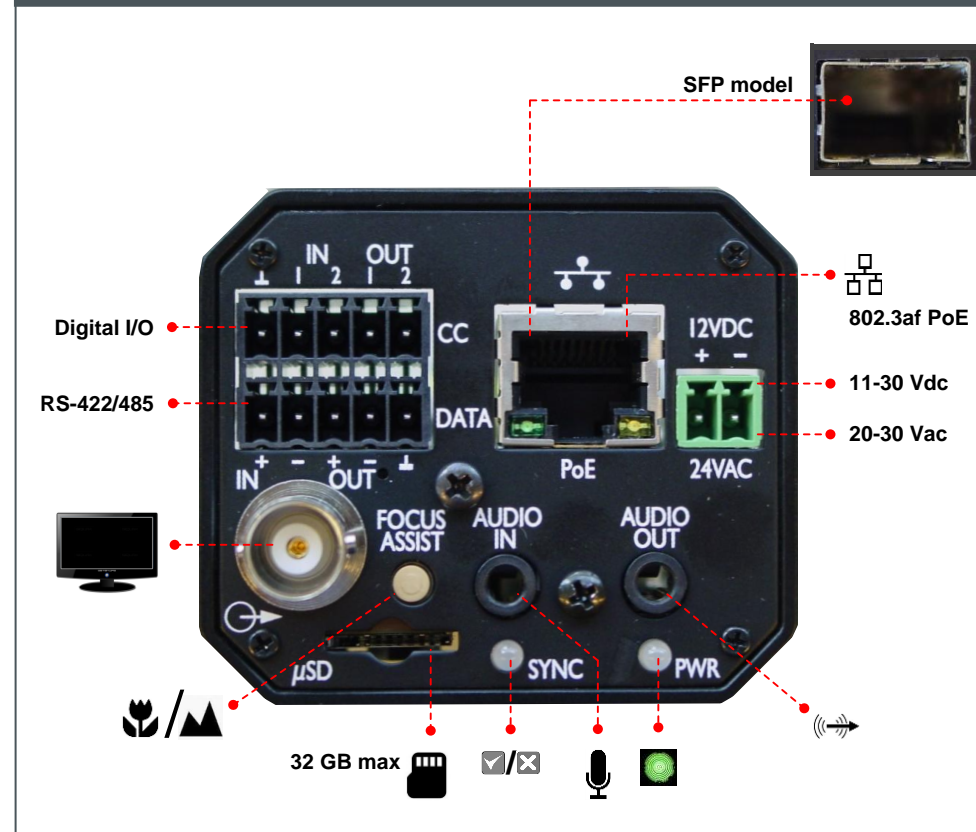
Quick Start Guide



Unpack camera



Familiarise with back panel



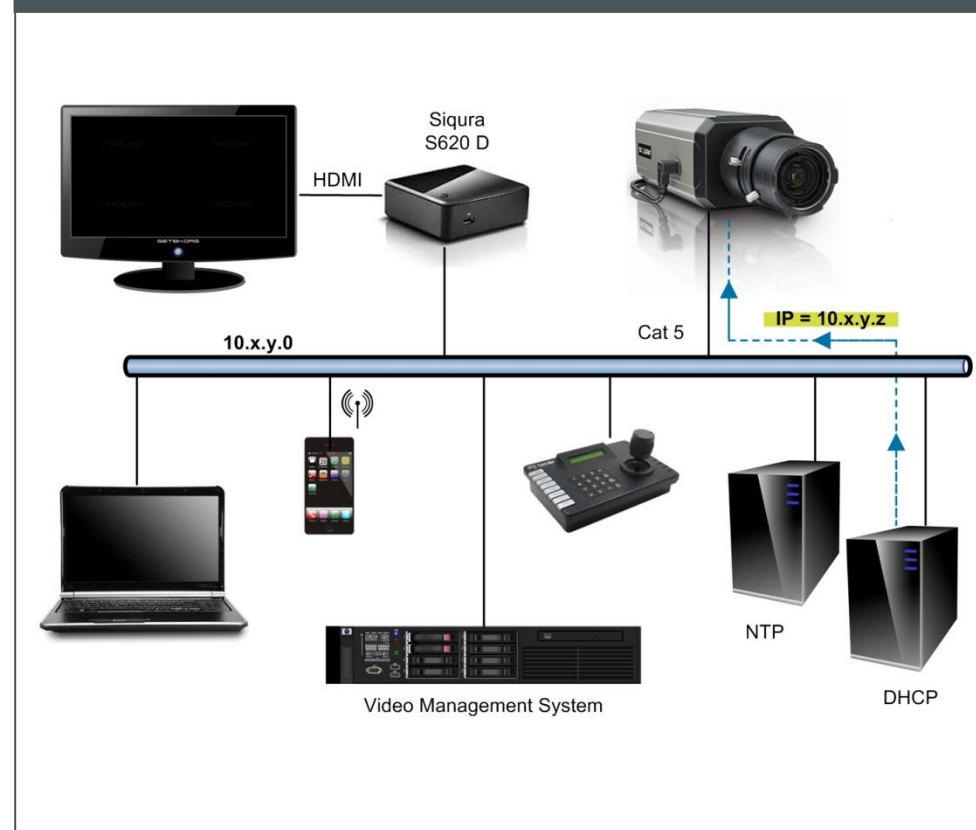
Connect cabling



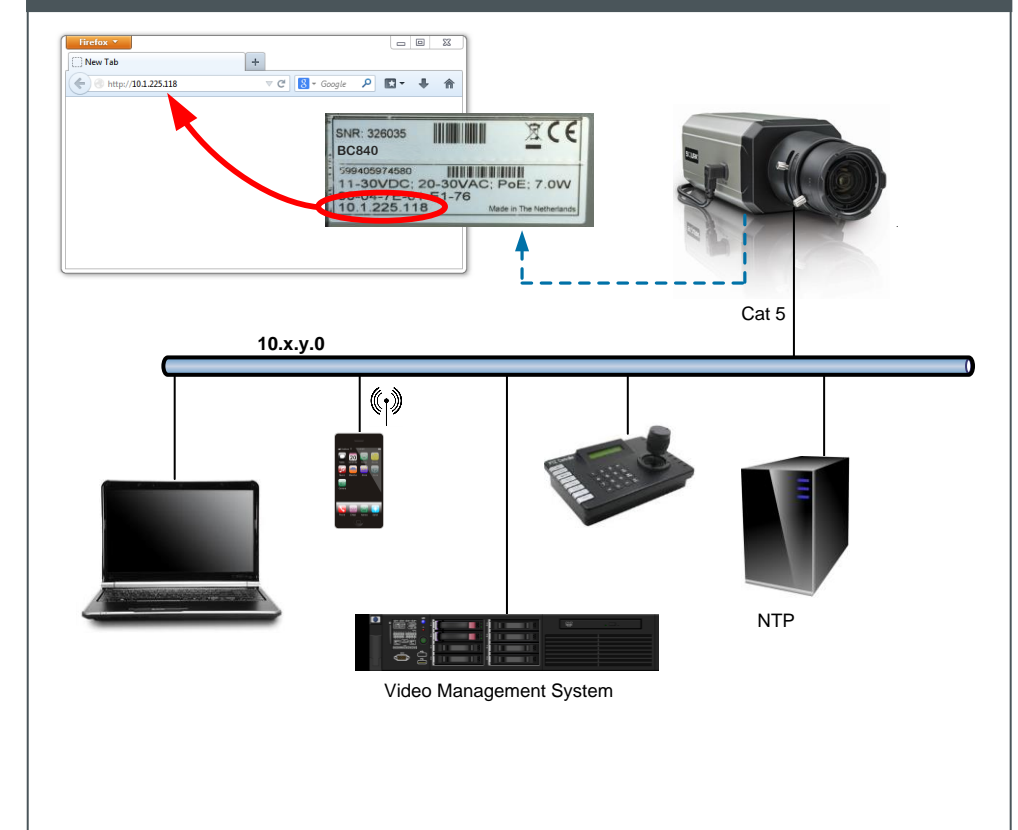
Mount camera



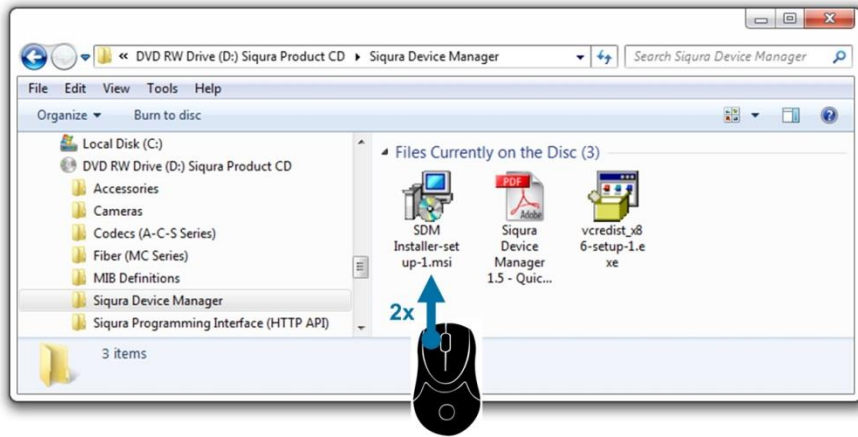
Assign IP address via DHCP ...



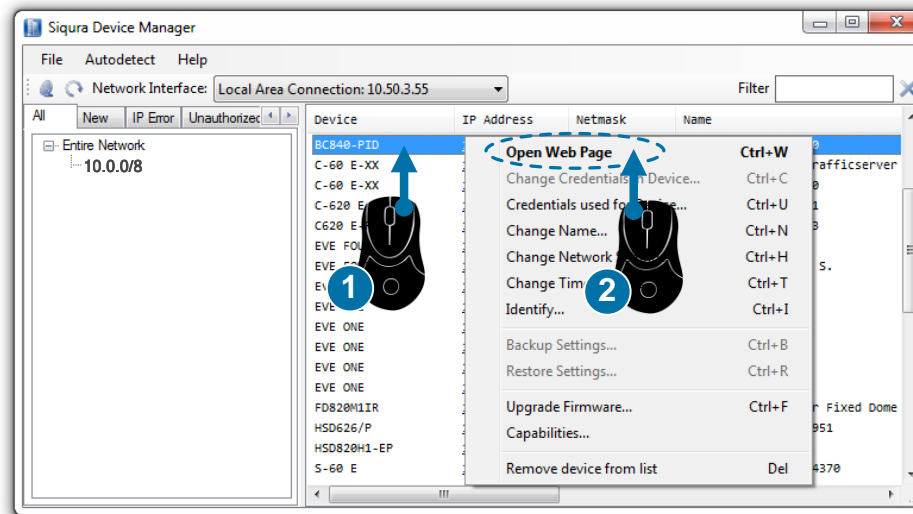
... or use factory-set IP address (optional)



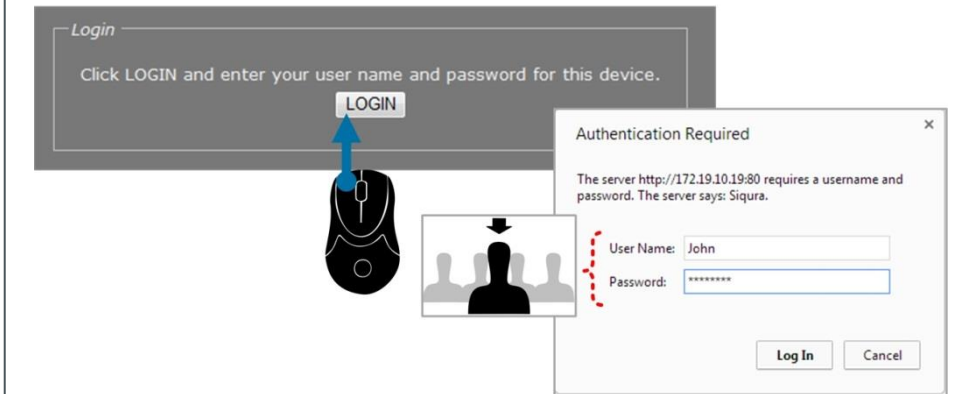
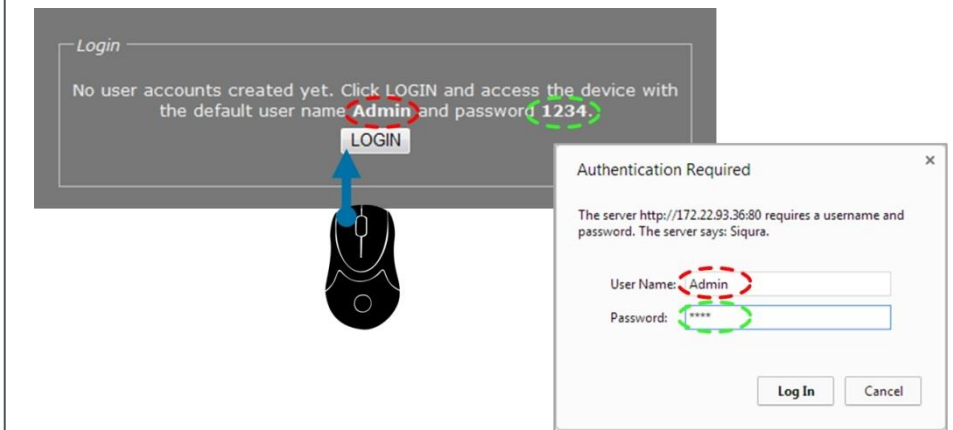
Install Siqura Device Manager (optional)



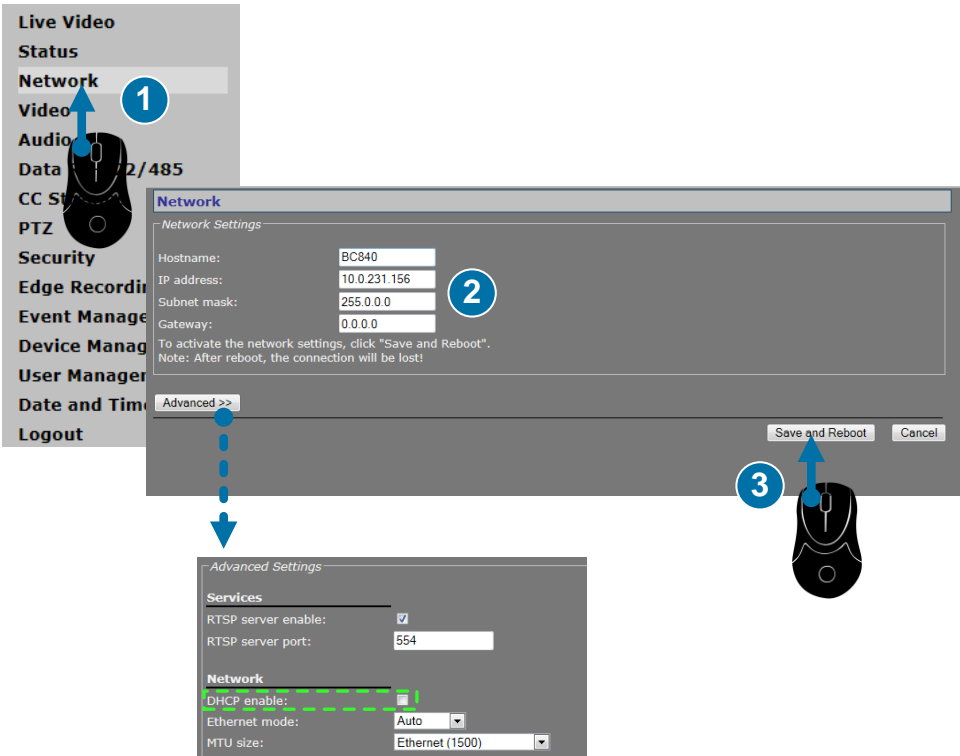
Access via Siqura Device Manager (optional)



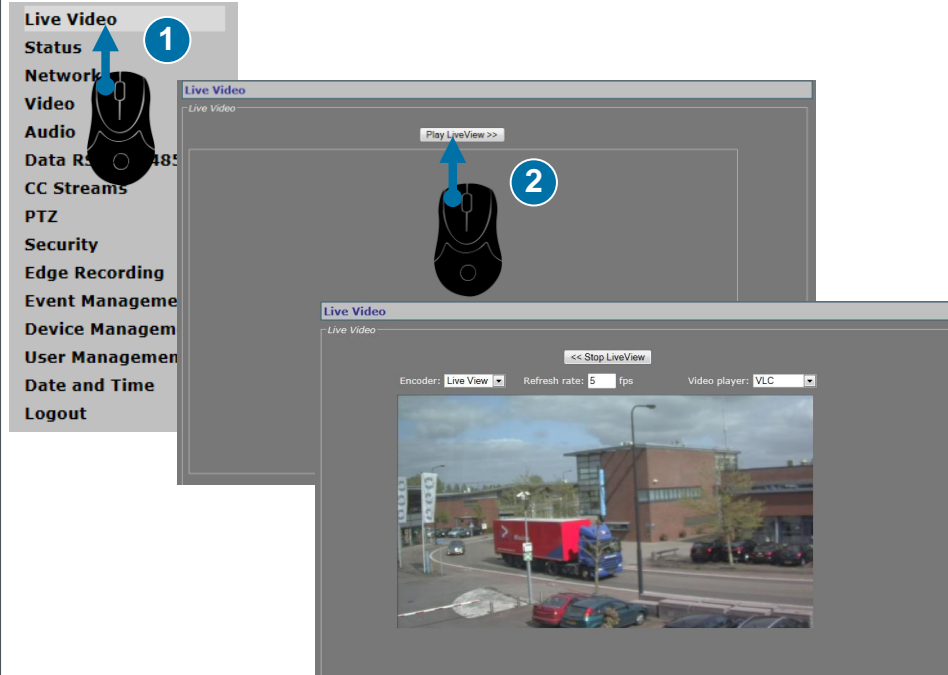
Log on to camera webpages



Change network settings



View live video via browser



View video stream in video player

