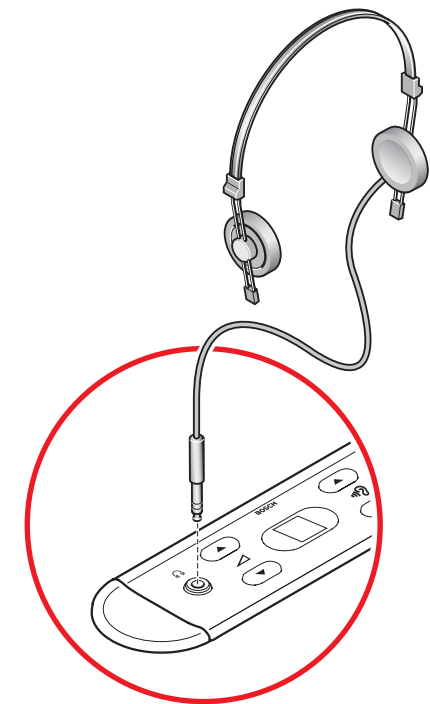
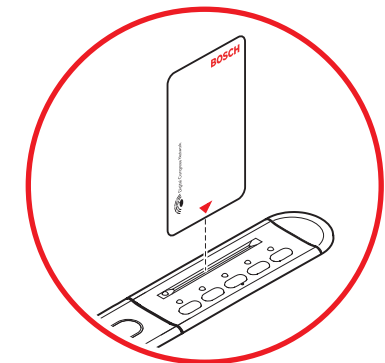
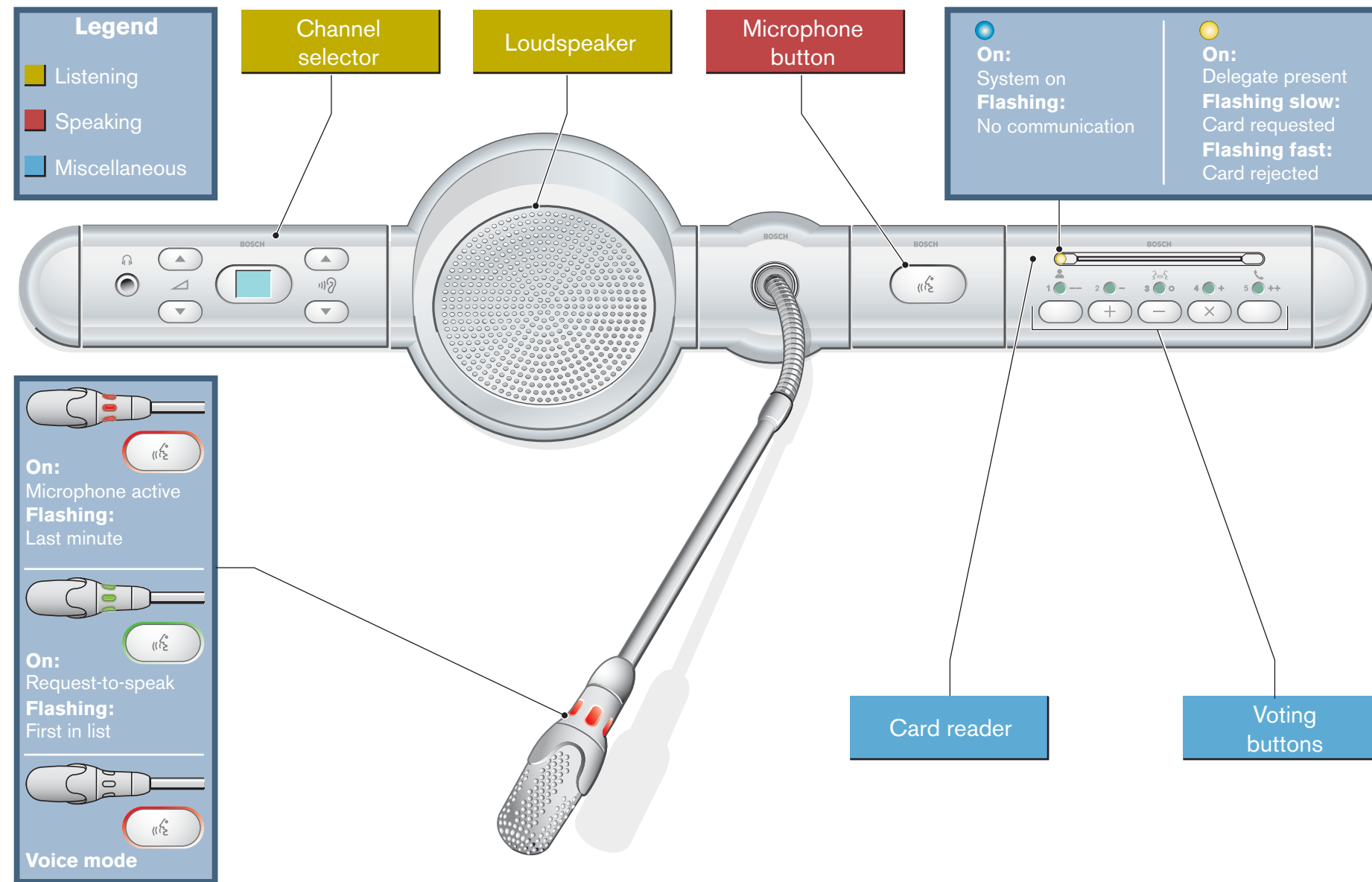


Flush-mounted Delegate Devices



Channel selector

With the channel selector, you can select the channel that is sent to the headphones. The channel selector is automatically enabled when you connect headphones to it.

Microphone

To enable the microphone:

Push the microphone button to enable the microphone of your flush-mounted delegate device.

- If the red light above the microphone button comes on, you can speak.
- If the green light above the microphone button comes on, your request-to-speak is accepted. You cannot speak until the red light above the microphone button comes on.

To cancel a request-to-speak:

When the green light above the microphone button is on, push the microphone button to cancel the request-to-speak. The operator can disable the possibility to cancel the request-to-speak.

To disable the microphone:

When the red light above the microphone button is on, push the microphone button to disable the microphone. The red light above the microphone button goes off. The operator can disable the possibility to disable the microphone.

To make a request-to-respond:

When the operator enables the response function, you can make a request-to-respond to speak to the current speaker. Push voting button 3 to make a request-to-respond. The yellow light adjacent to voting button 3 flashes. You cannot speak until the operator adds you to the response list. When the operator adds you to the response list, the red light above the microphone button comes on.

To cancel a request-to-respond:

When the yellow light adjacent to voting button 3 flashes, push voting button 3 to cancel the request-to-respond. The operator can disable the possibility to disable the request-to-respond.

VIP mode

When the yellow light around the microphone button comes on, your flush-mounted delegate device is in the VIP mode. In the VIP mode:

- You can always enable the microphone.
- You cannot make a request-to-speak.

Voice mode

When your flush-mounted delegate device is in the Voice mode, the microphone is always enabled. Push and hold the microphone button to temporarily disable the microphone. In the Voice mode, you cannot make a request-to-speak.

Voting

Standard procedure:

- 1 The chairman or operator starts a voting session. When the voting session is started, the yellow light adjacent to voting button 1 flashes.
- 2 Push voting button 1 to show the system that you are present. The yellow lights adjacent to the available voting buttons flash.
- 3 Make your vote. You can change your vote until the chairman or operator stops the voting session.

Intercom

When your flush-mounted delegate device receives an intercom call, the yellow light adjacent to voting button 5 flashes. Lift the intercom handset from its cradle to accept the intercom call.

To make an intercom call:

Lift the intercom handset from its cradle to make an intercom call to the operator. The yellow light adjacent to voting button 5 comes on. The operator can connect you to the person to whom you want to speak.